



13020006

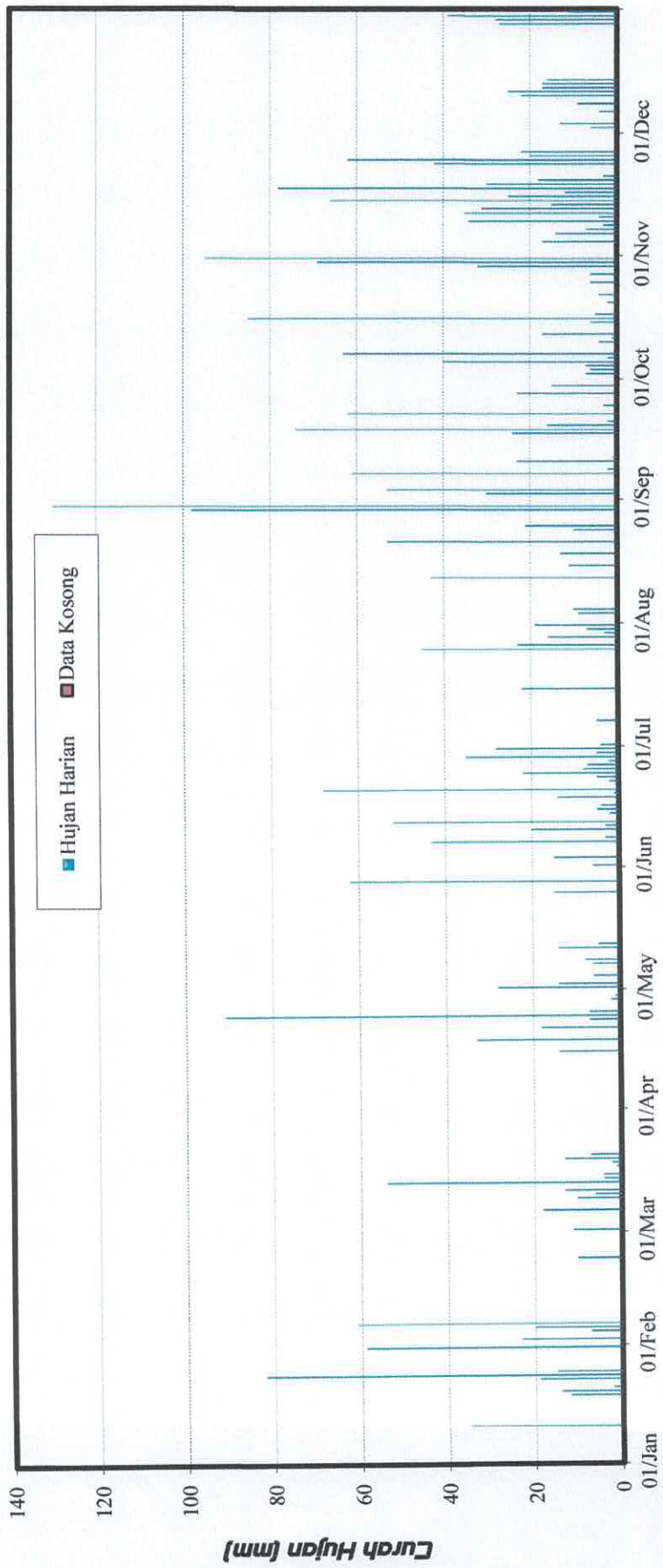
DATA CURAH HUJAN
POS CURAH HUJAN BALAI SALASA
KABUPATEN PESISIR SELATAN

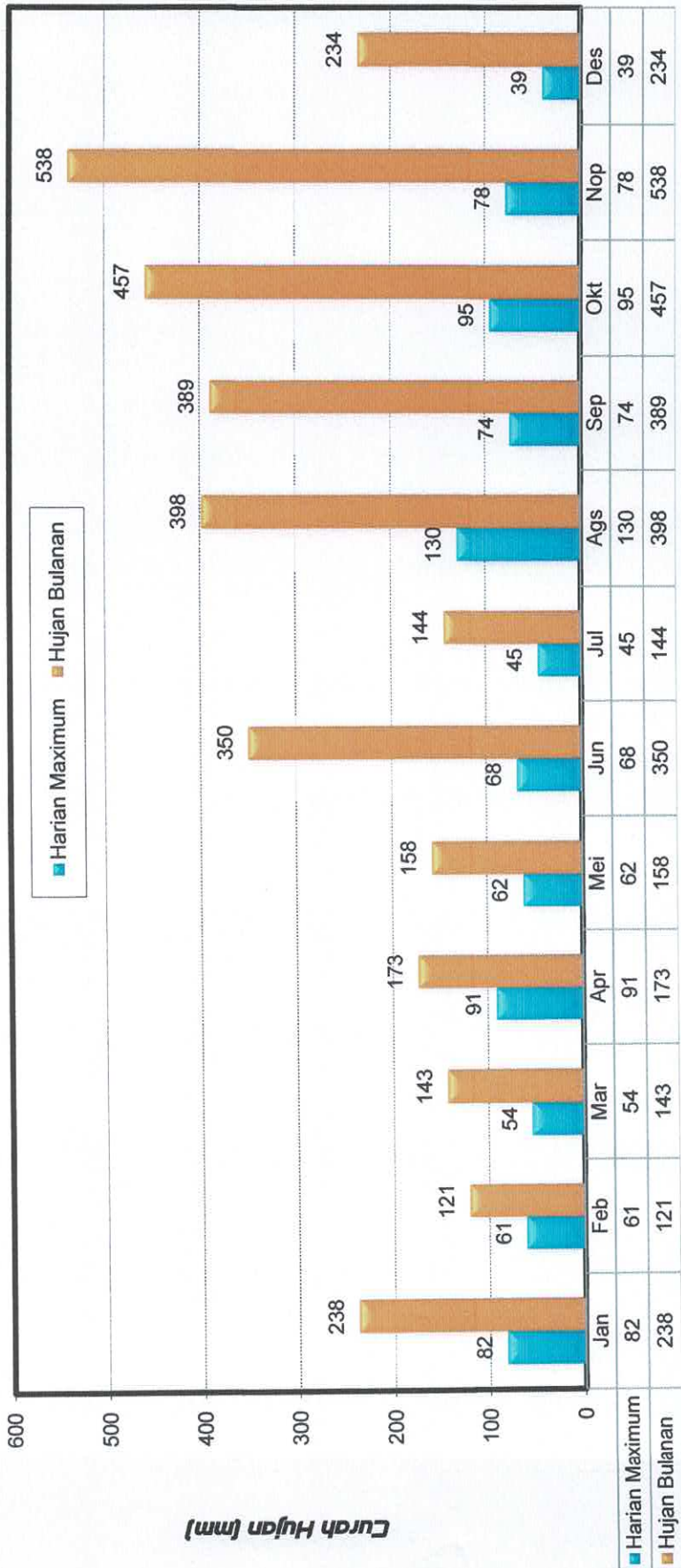
Curah Hujan Harian (mm)

Nama Stasiun : CH. Balai Salasa	Elevasi : 8 m	No Kadaster : -
No Stasiun : 13020006	Tipe alat : Manual	Kec : Ranah Pesisir Pessel
No In Database : -	Pemilik : UPTD PSDA Wil Selatan	Desa : Koto Nan Ampek
Lintang Selatan : 1°47'52.1"S	Operator : Junilawati	Sungai Induk : Batang Lengayang
Bujur Timur : 100°50'12.8"E		Thn di bangun : 2005

Tahun 2022

Tanggal	Bulan												Tahunan
	Jan	Feb	Mar	Apr	Mei	Jun	Jul	Ags	Sep	Okt	Nop	Des	
1	0	0	11	0	28	6	4	0	0	0	0	0	
2	0	23	0	0	14	0	0	0	30	7	0	6	
3	0	0	0	0	0	15	0	9	53	6	0	13	
4	0	7	0	0	6	0	0	10	0	7	17	0	
5	0	20	0	0	0	0	0	0	0	40	0	0	
6	0	61	18	0	0	0	0	0	0	2	14	4	
7	0	0	0	0	6	43	5	0	61	63	7	0	
8	0	0	0	0	8	3	0	0	2	0	3	9	
9	0	0	10	0	0	0	0	0	0	0	34	0	
10	0	0	6	0	0	20	0	0	23	4	4	22	
11	35	0	13	0	14	3	0	0	1	1	35	25	
12	0	0	0	0	5	52	0	43	0	17	31	17	
13	0	0	54	0	0	0	0	0	0	0	15	17	
14	0	0	4	0	0	2	0	0	0	0	66	16	
15	0	0	4	14	0	5	22	11	0	6	25	0	
16	0	0	0	0	0	4	0	0	0	85	12	0	
17	0	0	1	0	0	0	0	0	24	5	78	0	
18	0	0	2	33	0	14	0	13	74	0	30	0	
19	12	0	13	0	0	1	0	0	16	0	18	0	
20	14	0	7	0	0	68	0	0	2	2	3	0	
21	2	0	0	18	0	0	0	53	0	0	0	0	
22	0	10	0	0	0	2	0	0	62	4	0	0	
23	19	0	0	7	0	5	0	0	0	0	42	0	
24	82	0	0	91	0	22	0	10	3	0	62	0	
25	15	0	0	7	15	8	45	21	0	6	20	0	
26	0	0	0	0	0	7	23	0	0	0	22	0	
27	0	0	0	0	0	2	0	0	23	6	0	0	
28	0	0	0	2	62	35	16	0	0	0	0	27	
29	0		0	1	0	5	3	98	15	32	0	28	
30	0		0	0	0	28	7	130	0	69	0	39	
31	59		0		0		19	0		95		11	
Hujan Maximum	82	61	54	91	62	68	45	130	74	95	78	39	130
Jml Curah Hujan	238	121	143	173	158	350	144	398	389	457	538	234	3343
Jml. Hari Hujan	8	5	12	8	9	22	9	10	14	19	20	13	149
Rata-rata	30	24	12	22	18	16	16	40	28	24	27	18	22
Hujan (1-15)	35	111	120	14	81	149	31	73	170	153	251	129	
Jml. data kosong	0	0	0	0	0	0	0	0	0	0	0	0	
Hujan (16-31)	203	10	23	159	77	201	113	325	219	304	287	105	
Jml. data kosong	0	0	0	0	0	0	0	0	0	0	0	0	





Jumlah Hari Hujan (hari)

