



13020007

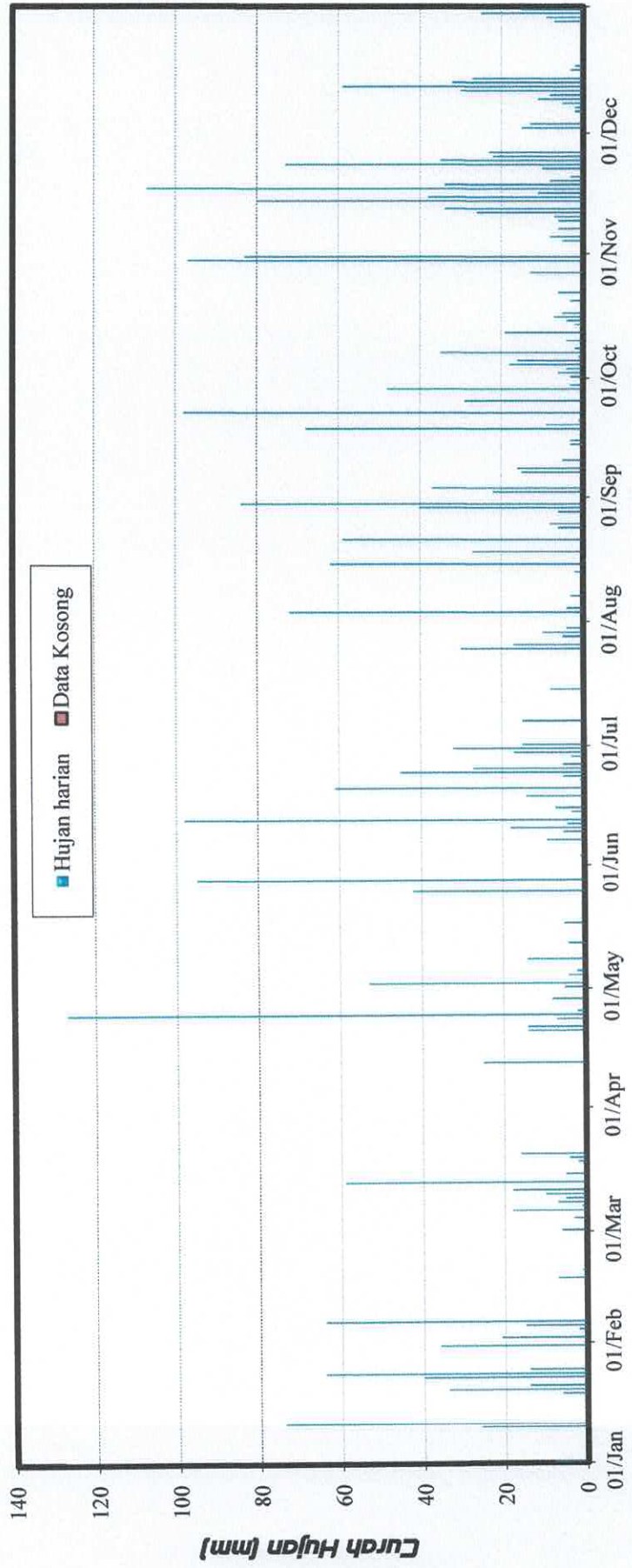
DATA CURAH HUJAN
POS CURAH HUJAN LENGAYANG
KABUPATEN PESISIR SELATAN

Curah Hujan Harian (mm)

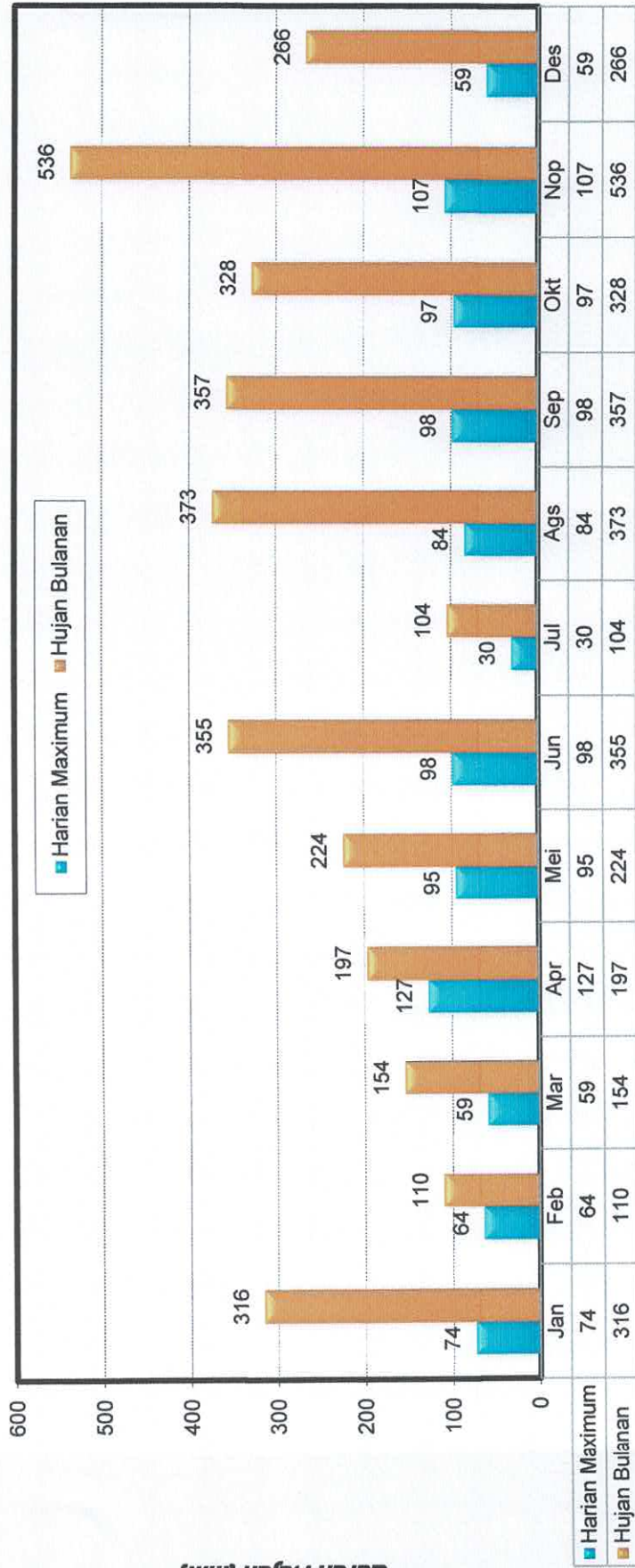
Nama Stasiun : CH. Lengayang	Elevasi : 8 m	No Kadaster : -
No Stasiun : 13020007	Tipe alat : Manual	Kec : Lengayang Pessel
No In Database :-	Pemilik : BMG	Desa : Nyiur Gading Lengayang
Lintang Selatan : 1°40'05.3"S	Operator : Satria Afriani andesti	Sungai Induk : Lengayang
Bujur Timur : 100°45'26.4"E		Thn di bangun : 2001

Tahun 2022

Tanggal	Bulan												Tahunan
	Jan	Feb	Mar	Apr	Mei	Jun	Jul	Ags	Sep	Okt	Nop	Des	
1	8	0	6	0	5	0	15	0	0	3	0	1	
2	0	21	0	0	53	0	0	0	22	6	0	15	
3	0	0	0	0	0	1	0	72	37	4	0	13	
4	0	2	3	0	4	0	0	4	0	18	5	0	
5	0	15	0	0	2	0	0	0	0	16	8	0	
6	0	64	18	0	0	0	0	0	0	1	0	2	
7	0	0	1	0	0	9	15	3	15	35	6	2	
8	0	0	7	0	14	0	0	0	16	2	0	5	
9	0	0	5	0	0	5	0	0	0	0	6	11	
10	26	0	10	0	0	18	0	0	5	4	7	8	
11	74	0	18	0	0	4	0	0	0	0	26	30	
12	0	0	0	25	4	98	0	0	0	19	34	59	
13	0	0	59	0	0	0	0	2	0	0	0	32	
14	0	0	0	0	0	3	0	0	3	2	80	27	
15	0	0	5	0	0	7	8	62	3	4	38	0	
16	0	0	0	0	0	0	0	0	0	7	11	3	
17	0	7	0	0	5	0	0	0	0	5	107	2	
18	0	0	2	0	0	14	0	27	68	0	34	0	
19	6	1	4	0	0	0	0	0	9	0	8	0	
20	34	0	16	14	0	61	0	0	1	3	3	0	
21	14	0	0	14	0	0	0	59	0	0	0	0	
22	0	0	0	0	0	1	0	0	98	6	10	0	
23	40	0	0	7	0	5	0	0	0	0	73	0	
24	64	0	0	127	0	45	0	6	0	0	35	0	
25	14	0	0	2	42	27	30	8	29	0	22	0	
26	0	0	0	0	0	5	17	0	0	0	23	0	
27	0	0	0	0	0	0	0	0	0	13	0	0	
28	0	0	0	8	95	3	5	6	48	0	0	7	
29	0		0	0	0	17	10	40	3	0	0	9	
30	0		0	0	0	32	4	84	0	97	0	25	
31	36		0		0		0	0		83		15	
Hujan Maximum	74	64	59	127	95	98	30	84	98	97	107	59	127
Jml Curah Hujan	316	110	154	197	224	355	104	373	357	328	536	266	3320
Jml.Hari Hujan	10	6	13	7	9	18	8	12	14	19	19	18	153
Rata-rata Hujan (1-15)	32	18	12	28	25	20	13	31	26	17	28	15	22
Jml. data kosong Hujan (16-31)	0	0	0	0	0	0	0	0	0	0	0	0	
Jml. data kosong	0	0	0	0	0	0	0	0	0	0	0	0	



Curah Hujan (mm)



long

