



13020004

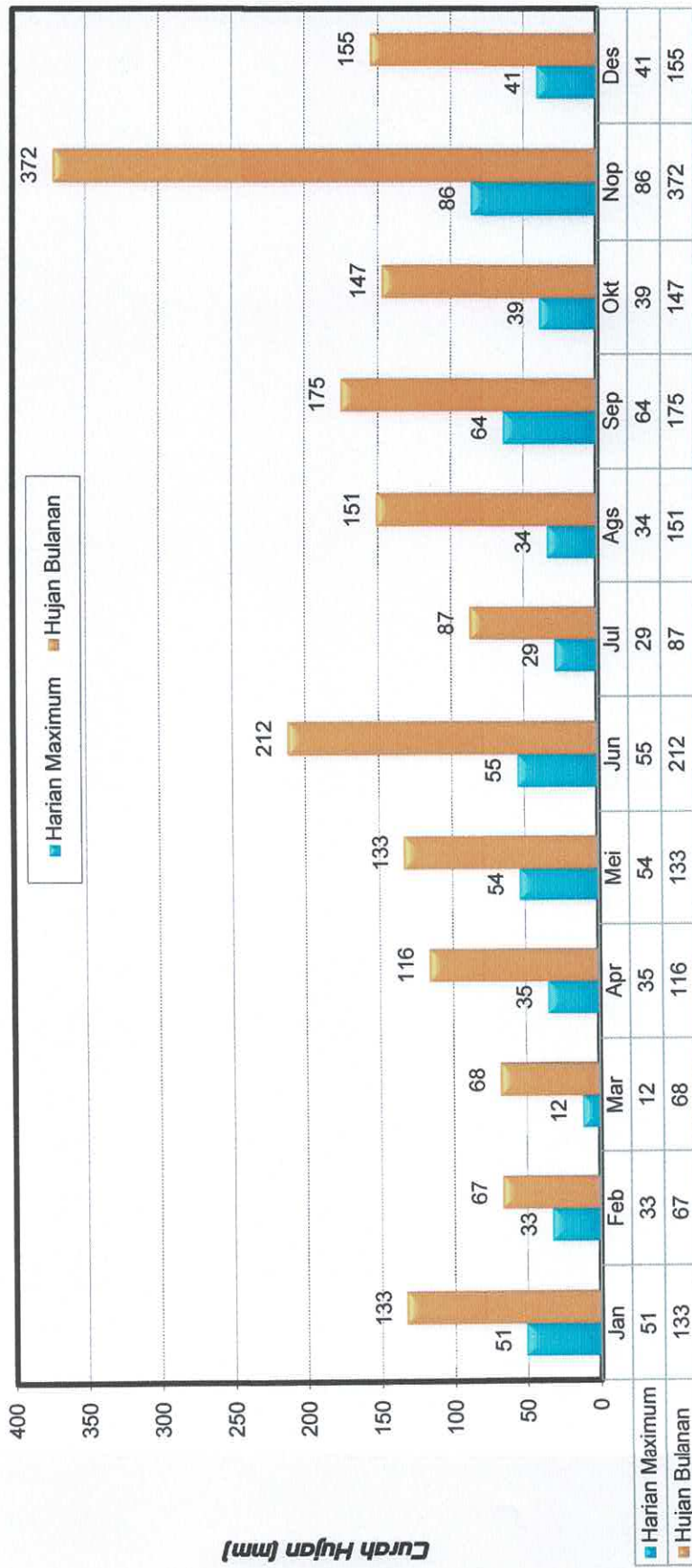
DATA CURAH HUJAN
POS CURAH HUJAN SURANTIH
KABUPATEN PESISIR SELATAN

Curah Hujan Harian (mm)

Nama Stasiun : CH. Surantih	Elevasi : 5 m	No Kadaster : -
No Stasiun : 13020004	Tipe alat : Manual	Kec : Sutera Pessel
No In Database : -	Pemilik : UPTD PSDA Wil Selatan	Desa : Surantih
Lintang Selatan : 1°34'38.5"	Operator : Abd. Rahmad Hidayah	Sungai Induk : Bt. Surantih
Bujur Timur : 100°40'20.9"		Thn di bangun : DPMA/1981

Tahun	2022
-------	------

Tanggal	Bulan												Tahunan
	Jan	Feb	Mar	Apr	Mei	Jun	Jul	Ags	Sep	Okt	Nop	Des	
1	1	1	3	0	3	4	3	0	0	15	1	0	
2	1	7	0	0	24	0	0	0	27	4	6	8	
3	0	1	0	0	1	3	0	17	25	2	0	11	
4	0	1	3	0	6	0	0	2	0	6	2	1	
5	0	21	0	0	0	0	0	0	0	8	2	3	
6	0	33	12	0	0	0	0	0	0	2	0	0	
7	0	0	0	16	1	11	1	2	3	18	11	4	
8	0	0	0	0	8	0	0	0	9	0	0	3	
9	0	0	4	0	0	1	0	0	0	0	5	0	
10	9	0	8	0	0	15	1	0	4	2	1	9	
11	51	0	12	0	5	0	2	0	0	0	18	19	
12	0	0	1	0	4	39	0	1	0	11	13	41	
13	0	0	4	1	1	0	0	1	0	2	1	6	
14	0	0	0	0	0	2	0	0	1	6	34	16	
15	0	0	1	0	0	2	6	11	1	3	18	0	
16	0	0	0	0	3	0	0	0	0	4	8	0	
17	0	2	0	0	0	0	0	0	0	4	86	0	
18	11	0	6	35	0	4	0	7	12	0	31	0	
19	3	1	5	1	0	0	0	0	5	0	1	0	
20	17	0	9	1	0	25	0	0	5	3	2	0	
21	0	0	0	7	0	0	0	27	1	0	6	0	
22	1	0	0	0	0	0	1	0	64	3	45	0	
23	12	0	0	6	0	2	0	0	0	0	27	0	
24	17	0	0	32	0	11	0	3	0	0	19	0	
25	7	0	0	1	23	55	29	14	8	1	11	0	
26	0	0	0	3	0	8	26	0	0	1	24	0	
27	0	0	0	0	0	0	0	0	0	6	0	0	
28	0	0	0	12	54	4	5	1	9	0	0	4	
29	0		0	1	0	12	3	31	1	0	0	0	
30	0		0	0	0	14	5	34	0	7	0	14	
31	3		0		0		5	0		39		16	
Hujan Maximum	51	33	12	35	54	55	29	34	64	39	86	41	86
Jml Curah Hujan	133	67	68	116	133	212	87	151	175	147	372	155	1816
Jml.Hari Hujan	12	8	12	12	12	17	12	13	15	21	23	14	171
Rata-rata	11	8	6	10	11	12	7	12	12	7	16	11	11
Hujan (1-15)	62	64	48	17	53	77	13	34	70	79	112	121	
Jml. data kosong	0	0	0	0	0	0	0	0	0	0	0	0	
Hujan (16-31)	71	3	20	99	80	135	74	117	105	68	260	34	
Jml. data kosong	0	0	0	0	0	0	0	0	0	0	0	0	



Jumlah Hari Hujan (hari)

