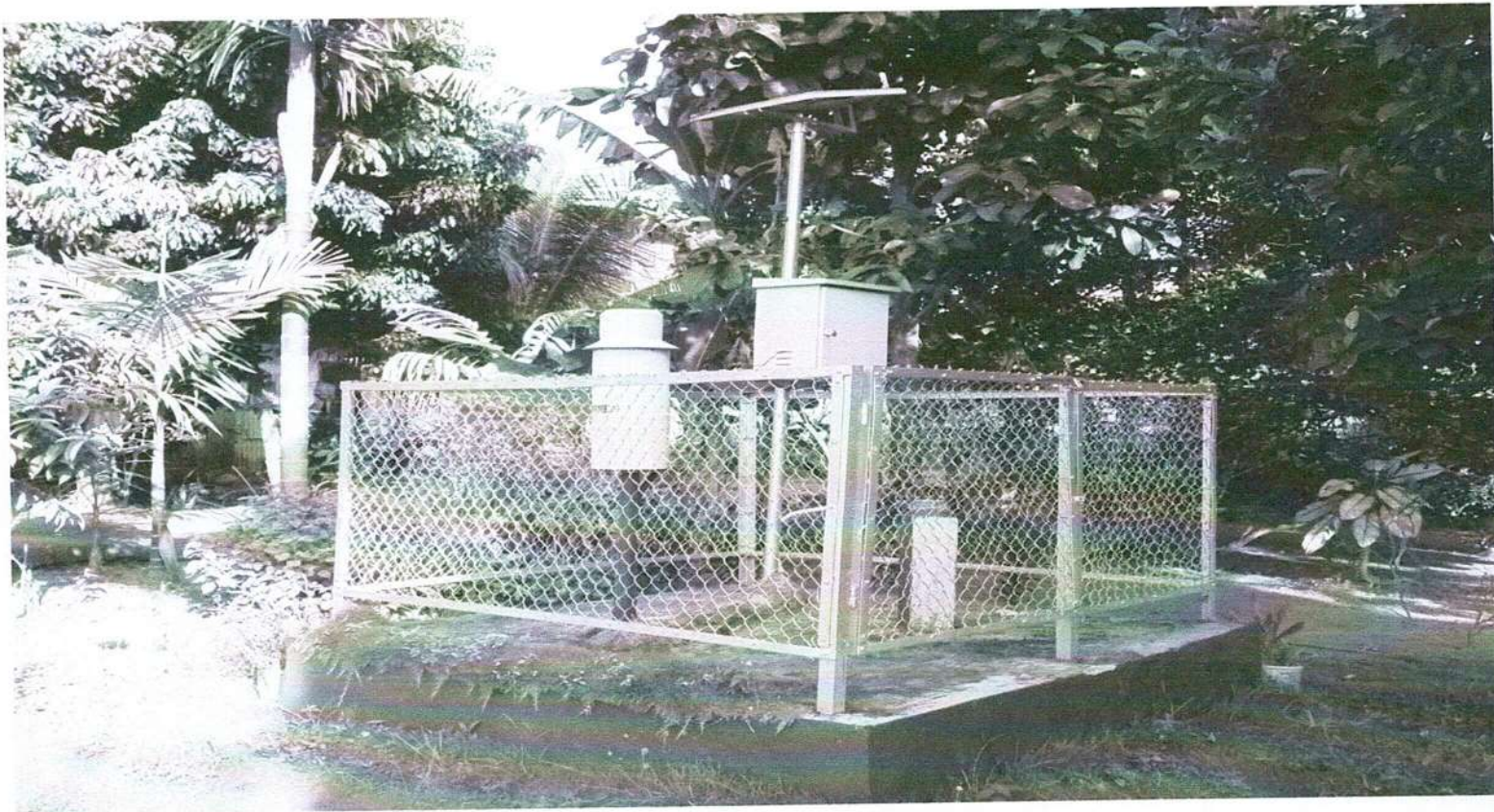


UJUNG GADING.



Curah Hujan Harian (mm)

| | | | |
|-----------------|--------------|-------------|--------------------|
| Nama Stasiun | Ujung Gading | River Basin | Batang Sikabau |
| No Stasiun | 0 | Elevasi | 0 |
| No In Database | 0 | Tipe alat | Manual |
| Lintang Selatan | 0,275539° | Pemilik | SDA & BK Wil Utara |
| Bujur Timur | 99,550337° | Operator | RAHMADINI |

Tahun 2022

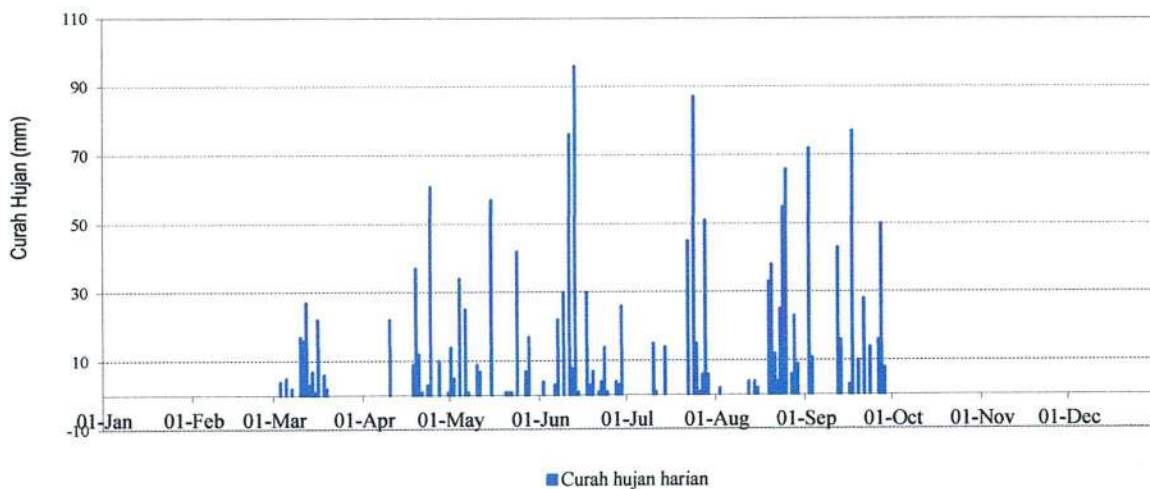
| Tanggal | Bulan | | | | | | | | | | | |
|------------------|-------|-----|-----|-----|-----|-----|-----|-----|-----|-----|-----|-----|
| | Jan | Feb | Mar | Apr | Mei | Jun | Jul | Ags | Sep | Okt | Nop | Des |
| 1 | tad | tad | 0 | 0 | 14 | 0 | 0 | 0 | 0 | 0 | 0 | 0 |
| 2 | tad | tad | 0 | 0 | 5 | 4 | 0 | 2 | 72 | 0 | 0 | 0 |
| 3 | tad | tad | 4 | 0 | 0 | 0 | 0 | 0 | 11 | 0 | 0 | 0 |
| 4 | tad | tad | 0 | 0 | 34 | 0 | 0 | 0 | 0 | 0 | 0 | 0 |
| 5 | tad | tad | 5 | 0 | 0 | 0 | 0 | 0 | 0 | 0 | 0 | 0 |
| 6 | tad | tad | 0 | 0 | 25 | 3 | 0 | 0 | 0 | 0 | 0 | 0 |
| 7 | tad | tad | 2 | 0 | 1 | 22 | 0 | 0 | 0 | 0 | 0 | 0 |
| 8 | tad | tad | 0 | 0 | 0 | 0 | 0 | 0 | 0 | 0 | 0 | 0 |
| 9 | tad | tad | 0 | 0 | 0 | 30 | 0 | 0 | 0 | 0 | 0 | 0 |
| 10 | tad | tad | 17 | 22 | 9 | 0 | 15 | 0 | 0 | 0 | 0 | 0 |
| 11 | tad | tad | 16 | 0 | 7 | 76 | 1 | 0 | 0 | 0 | 0 | 0 |
| 12 | tad | tad | 27 | 0 | 0 | 8 | 0 | 4 | 43 | 0 | 0 | 0 |
| 13 | tad | tad | 3 | 0 | 0 | 96 | 0 | 0 | 16 | 0 | 0 | 0 |
| 14 | tad | tad | 7 | 0 | 0 | 1 | 14 | 4 | 0 | 0 | 0 | 0 |
| 15 | tad | tad | 1 | 0 | 57 | 0 | 0 | 2 | 0 | 0 | 0 | 0 |
| 16 | tad | tad | 22 | 0 | 0 | 0 | 0 | 0 | 3 | 0 | 0 | 0 |
| 17 | tad | tad | 0 | 0 | 0 | 30 | 0 | 0 | 77 | 0 | 0 | 0 |
| 18 | tad | tad | 6 | 9 | 0 | 3 | 0 | 0 | 0 | 0 | 0 | 0 |
| 19 | tad | tad | 2 | 37 | 0 | 7 | 0 | 33 | 10 | 0 | 0 | 0 |
| 20 | tad | tad | 0 | 12 | 1 | 0 | 0 | 38 | 0 | 0 | 0 | 0 |
| 21 | tad | tad | 0 | 1 | 1 | 1 | 0 | 12 | 28 | 0 | 0 | 0 |
| 22 | tad | tad | 0 | 0 | 1 | 4 | 45 | 4 | 0 | 0 | 0 | 0 |
| 23 | tad | tad | 0 | 3 | 0 | 14 | 0 | 25 | 14 | 0 | 0 | 0 |
| 24 | tad | tad | 0 | 61 | 42 | 1 | 87 | 55 | 0 | 0 | 0 | 0 |
| 25 | tad | tad | 0 | 0 | 0 | 0 | 15 | 66 | 0 | 0 | 0 | 0 |
| 26 | tad | tad | 0 | 0 | 0 | 0 | 1 | 0 | 16 | 0 | 0 | 0 |
| 27 | tad | tad | 0 | 10 | 7 | 4 | 6 | 6 | 50 | 0 | 0 | 0 |
| 28 | tad | tad | 0 | 0 | 17 | 3 | 51 | 23 | 8 | 0 | 0 | 0 |
| 29 | tad | | 0 | 0 | 0 | 26 | 6 | 9 | 0 | 0 | 0 | 0 |
| 30 | tad | | 0 | 1 | 0 | 0 | 0 | 0 | 0 | 0 | 0 | 0 |
| 31 | tad | | 0 | | 0 | | 0 | 0 | | 0 | | 0 |
| Hujan Maximum | - | - | 27 | 61 | 57 | 96 | 87 | 66 | 77 | 0 | 0 | 0 |
| Jml Curah Hujan | - | - | 112 | 156 | 221 | 333 | 241 | 283 | 348 | 0 | 0 | 0 |
| Jml.Hari Hujan | 0 | 0 | 12 | 9 | 14 | 18 | 10 | 14 | 12 | 0 | 0 | 0 |
| Hujan (1-15) | - | - | 82 | 22 | 152 | 240 | 30 | 12 | 142 | 0 | 0 | 0 |
| Jml. data kosong | 15 | 15 | 0 | 0 | 0 | 0 | 0 | 0 | 0 | 0 | 0 | 0 |
| Hujan (16-31) | - | - | 30 | 134 | 69 | 93 | 211 | 271 | 206 | 0 | 0 | 0 |
| Jml. data kosong | 16 | 13 | 0 | 0 | 0 | 0 | 0 | 0 | 0 | 0 | 0 | 0 |

Catatan :

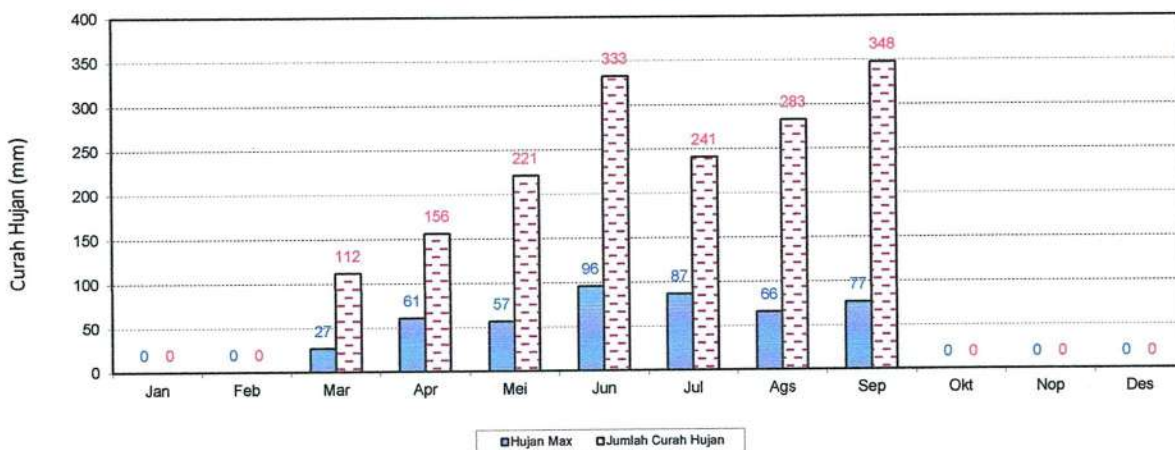
Perhitungan statistik tidak dilakukan bilamana jumlah data kosong dalam setengah bulan > 5 hari
 Tampilan grafik hujan harian negatif berarti pada tanggal tersebut tidak ada data hujan harian

5 hari

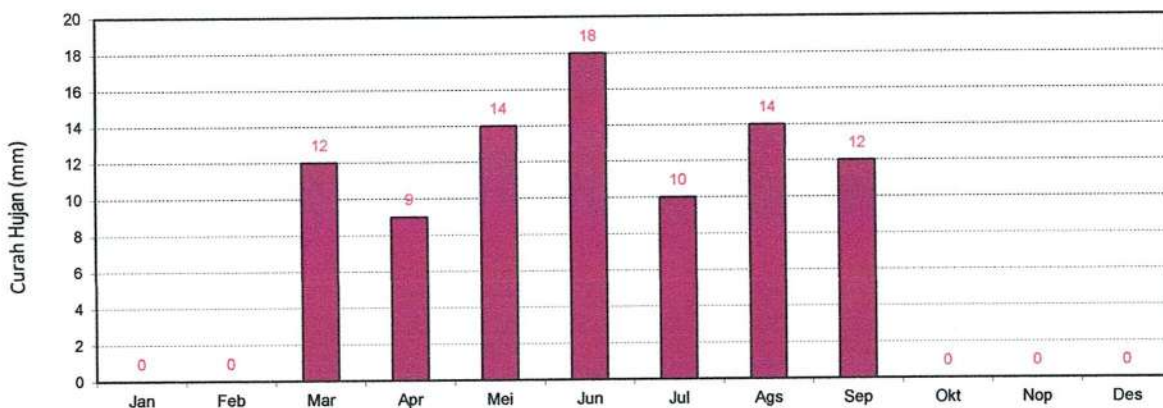
STATISTIK CURAH HUJAN HARIAN (MM)
STASIUN : UJUNG GADING



GRAFIK : HUJAN MAX DAN JUMLAH HUJAN BULANAN (MM)
STASIUN : UJUNG GADING



GRAFIK : JUMLAH HARI HUJAN (MM)
STASIUN : UJUNG GADING



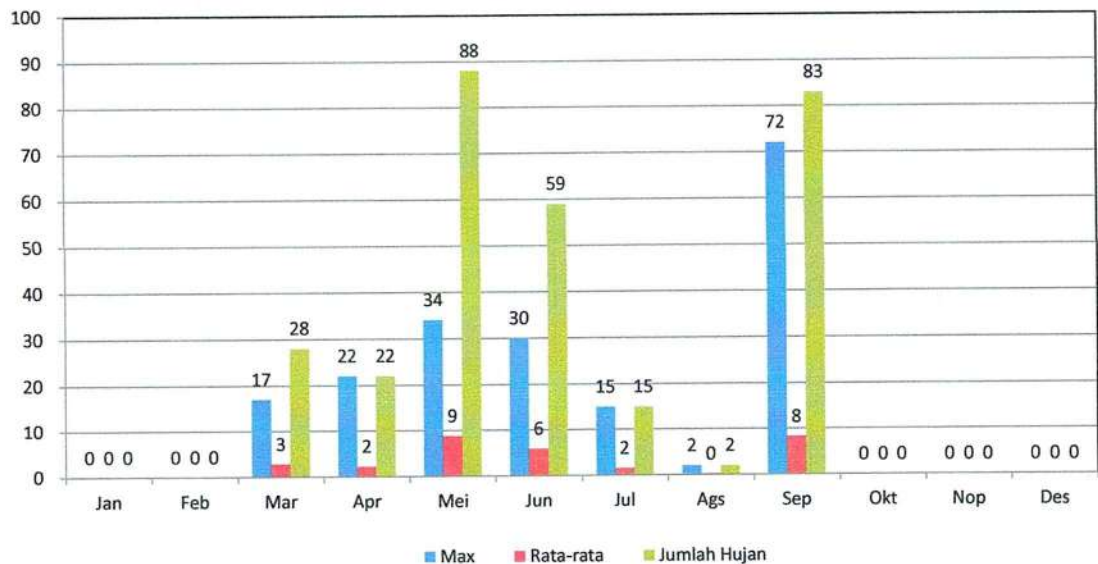
Curah Hujan Priode 10 Harian 1 (mm)

| | | | |
|-----------------|--------------|-------------|--------------------|
| Nama Stasiun | Ujung Gading | River Basin | Batang Sikabau |
| No Stasiun | 0 | Elevasi | 0 |
| No In Database | 0 | Tipe alat | Manual |
| Lintang Selatan | 0,275539° | Pemilik | SDA & BK Wil Utara |
| Bujur Timur | 99,550337° | Operator | RAHMADINI |

Tahun 2022

| Tanggal | 10 harian (1) mm | | | | | | | | | | | |
|---------------------|------------------|---------|-----|-----|-----|-----|-----|-----|-----|-----|-----|-----|
| | Jan | Feb | Mar | Apr | Mei | Jun | Jul | Ags | Sep | Okt | Nop | Des |
| 1 | tad | tad | 0 | 0 | 14 | 0 | 0 | 0 | 0 | 0 | 0 | 0 |
| 2 | tad | tad | 0 | 0 | 5 | 4 | 0 | 2 | 72 | 0 | 0 | 0 |
| 3 | tad | tad | 4 | 0 | 0 | 0 | 0 | 0 | 11 | 0 | 0 | 0 |
| 4 | tad | tad | 0 | 0 | 34 | 0 | 0 | 0 | 0 | 0 | 0 | 0 |
| 5 | tad | tad | 5 | 0 | 0 | 0 | 0 | 0 | 0 | 0 | 0 | 0 |
| 6 | tad | tad | 0 | 0 | 25 | 3 | 0 | 0 | 0 | 0 | 0 | 0 |
| 7 | tad | tad | 2 | 0 | 1 | 22 | 0 | 0 | 0 | 0 | 0 | 0 |
| 8 | tad | tad | 0 | 0 | 0 | 0 | 0 | 0 | 0 | 0 | 0 | 0 |
| 9 | tad | tad | 0 | 0 | 0 | 30 | 0 | 0 | 0 | 0 | 0 | 0 |
| 10 | tad | tad | 17 | 22 | 9 | 0 | 15 | 0 | 0 | 0 | 0 | 0 |
| Max | 0 | 0 | 17 | 22 | 34 | 30 | 15 | 2 | 72 | 0 | 0 | 0 |
| Min | 0 | 0 | 0 | 0 | 0 | 0 | 0 | 0 | 0 | 0 | 0 | 0 |
| Rata-rata | #DIV/0! | #DIV/0! | 3 | 2 | 9 | 6 | 2 | 0 | 8 | 0 | 0 | 0 |
| Jumlah Hujan | 0 | 0 | 28 | 22 | 88 | 59 | 15 | 2 | 83 | 0 | 0 | 0 |

GRAFIK : CURAH HUJAN PRIODE 10 HARIAN 1 (MM)
STASIUN : UJUNG GADING



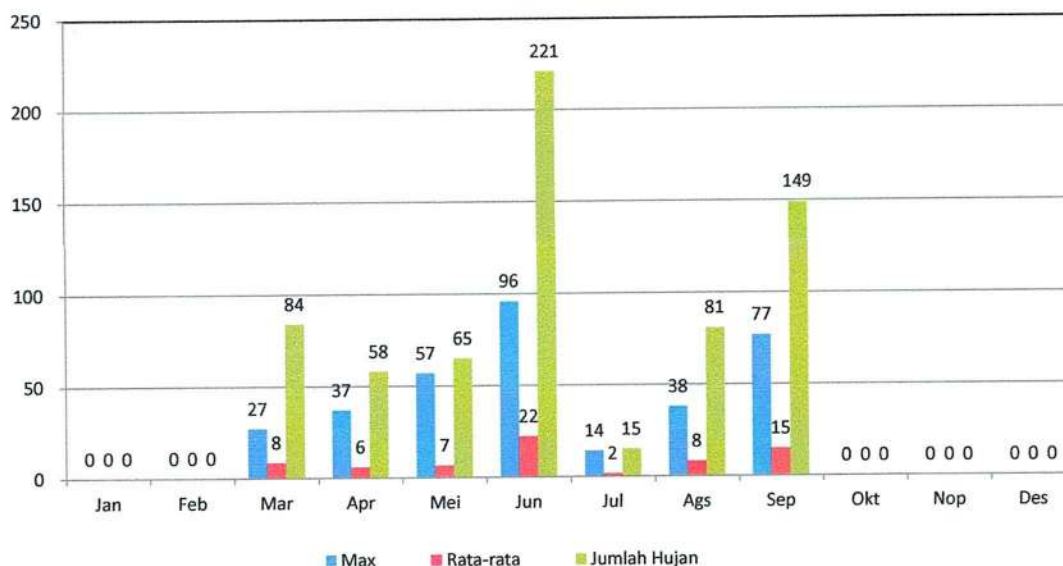
Curah Hujan Priode 10 Hari 2 (mm)

| | | | |
|-----------------|--------------|-------------|--------------------|
| Nama Stasiun | Ujung Gading | River Basin | Batang Sikabau |
| No Stasiun | 0 | Elevasi | 0 |
| No In Database | 0 | Tipe alat | Manual |
| Lintang Selatan | 0,275539° | Pemilik | SDA & BK Wil Utara |
| Bujur Timur | 99,550337° | Operator | RAHMADINI |

Tahun 2022

| Tanggal | 10 Hari 2 (mm) | | | | | | | | | | | |
|---------------------|----------------|---------|-----|-----|-----|-----|-----|-----|-----|-----|-----|-----|
| | Jan | Feb | Mar | Apr | Mei | Jun | Jul | Ags | Sep | Okt | Nop | Des |
| 11 | tad | tad | 16 | 0 | 7 | 76 | 1 | 0 | 0 | 0 | 0 | 0 |
| 12 | tad | tad | 27 | 0 | 0 | 8 | 0 | 4 | 43 | 0 | 0 | 0 |
| 13 | tad | tad | 3 | 0 | 0 | 96 | 0 | 0 | 16 | 0 | 0 | 0 |
| 14 | tad | tad | 7 | 0 | 0 | 1 | 14 | 4 | 0 | 0 | 0 | 0 |
| 15 | tad | tad | 1 | 0 | 57 | 0 | 0 | 2 | 0 | 0 | 0 | 0 |
| 16 | tad | tad | 22 | 0 | 0 | 0 | 0 | 0 | 3 | 0 | 0 | 0 |
| 17 | tad | tad | 0 | 0 | 0 | 30 | 0 | 0 | 77 | 0 | 0 | 0 |
| 18 | tad | tad | 6 | 9 | 0 | 3 | 0 | 0 | 0 | 0 | 0 | 0 |
| 19 | tad | tad | 2 | 37 | 0 | 7 | 0 | 33 | 10 | 0 | 0 | 0 |
| 20 | tad | tad | 0 | 12 | 1 | 0 | 0 | 38 | 0 | 0 | 0 | 0 |
| Max | 0 | 0 | 27 | 37 | 57 | 96 | 14 | 38 | 77 | 0 | 0 | 0 |
| Min | 0 | 0 | 0 | 0 | 0 | 0 | 0 | 0 | 0 | 0 | 0 | 0 |
| Rata-rata | #DIV/0! | #DIV/0! | 8 | 6 | 7 | 22 | 2 | 8 | 15 | 0 | 0 | 0 |
| Jumlah Hujan | 0 | 0 | 84 | 58 | 65 | 221 | 15 | 81 | 149 | 0 | 0 | 0 |

GRAFIK : CURAH HUJAN PRIODE 10 HARI 2 (MM)
STASIUN : UJUNG GADING



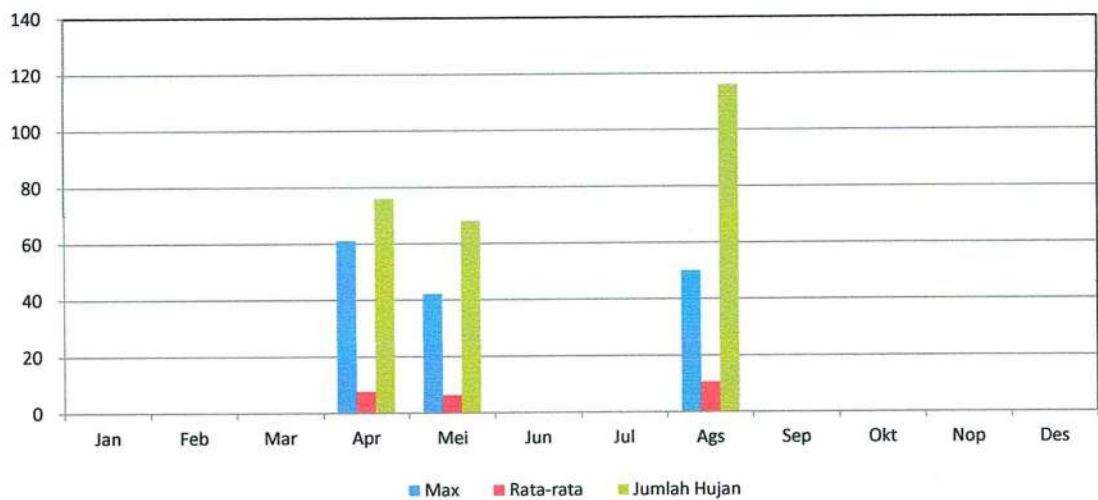
Curah Hujan priode 10 Harian 3 (mm)

| | | | |
|-----------------|--------------|-------------|--------------------|
| Nama Stasiun | Ujung Gading | River Basin | Batang Sikabau |
| No Stasiun | 0 | Elevasi | 0 |
| No In Database | 0 | Tipe alat | Manual |
| Lintang Selatan | 0,275539° | Pemilik | SDA & BK Wil Utara |
| Bujur Timur | 99,550337° | Operator | RAHMADINI |

Tahun 2022

| Tanggal | Bulan | | | | | | | | | | | |
|---------------------|---------|---------|-----|-----|-----|-----|-----|-----|-----|-----|-----|-----|
| | Jan | Feb | Mar | Apr | Mei | Jun | Jul | Ags | Sep | Okt | Nop | Des |
| 21 | tad | tad | 0 | 1 | 1 | 0 | 0 | 28 | 0 | 0 | 0 | 0 |
| 22 | tad | tad | 0 | 0 | 1 | 0 | 0 | 0 | 0 | 0 | 0 | 0 |
| 23 | tad | tad | 0 | 3 | 0 | 0 | 0 | 14 | 0 | 0 | 0 | 0 |
| 24 | tad | tad | 0 | 61 | 42 | 0 | 0 | 0 | 0 | 0 | 0 | 0 |
| 25 | tad | tad | 0 | 0 | 0 | 0 | 0 | 0 | 0 | 0 | 0 | 0 |
| 26 | tad | tad | 0 | 0 | 0 | 0 | 0 | 16 | 0 | 0 | 0 | 0 |
| 27 | tad | tad | 0 | 10 | 7 | 0 | 0 | 50 | 0 | 0 | 0 | 0 |
| 28 | tad | tad | 0 | 0 | 17 | 0 | 0 | 8 | 0 | 0 | 0 | 0 |
| 29 | tad | | 0 | 0 | 0 | 0 | 0 | 0 | 0 | 0 | 0 | 0 |
| 30 | tad | | 0 | 1 | 0 | 0 | 0 | 0 | 0 | 0 | 0 | 0 |
| 31 | tad | | 0 | | 0 | | 0 | 0 | | 0 | | 0 |
| Max | 0 | 0 | 0 | 61 | 42 | 0 | 0 | 50 | 0 | 0 | 0 | 0 |
| Min | 0 | 0 | 0 | 0 | 0 | 0 | 0 | 0 | 0 | 0 | 0 | 0 |
| Rata-rata | #DIV/0! | #DIV/0! | 0 | 8 | 6 | 0 | 0 | 11 | 0 | 0 | 0 | 0 |
| Jumlah Hujan | 0 | 0 | 0 | 76 | 68 | 0 | 0 | 116 | 0 | 0 | 0 | 0 |

GRAFIK : CURAH HUJAN PRIODE 10 HARIAN 3 (MM)
STASIUN : UJUNG GADING



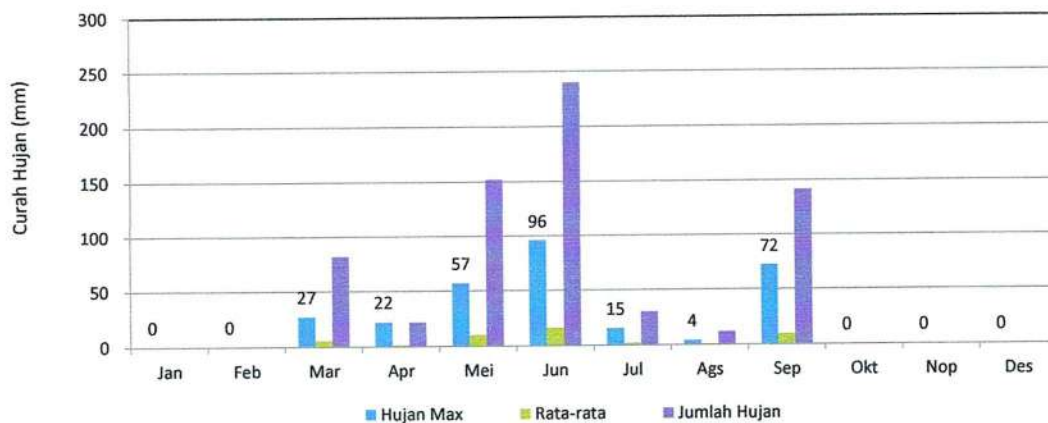
Curah Hujan Priode 15 Harian 1 (mm)

| Nama Stasiun | Ujung Gading | River Basin | Batang Sikabau |
|-----------------|--------------|-------------|--------------------|
| No Stasiun | 0 | Elevasi | 0 |
| No In Database | 0 | Tipe alat | Manual |
| Lintang Selatan | 0,275539° | Pemilik | SDA & BK Wil Utara |
| Bujur Timur | 99,550337° | Operator | RAHMADINI |

Tahun 2022

| Tanggal | 15 Harian (1) | | | | | | | | | | | |
|--------------|---------------|---------|-----|-----|-----|-----|-----|-----|-----|-----|-----|-----|
| | Jan | Feb | Mar | Apr | Mei | Jun | Jul | Ags | Sep | Okt | Nop | Des |
| 1 | tad | tad | 0 | 0 | 14 | 0 | 0 | 0 | 0 | 0 | 0 | 0 |
| 2 | tad | tad | 0 | 0 | 5 | 4 | 0 | 2 | 72 | 0 | 0 | 0 |
| 3 | tad | tad | 4 | 0 | 0 | 0 | 0 | 0 | 11 | 0 | 0 | 0 |
| 4 | tad | tad | 0 | 0 | 34 | 0 | 0 | 0 | 0 | 0 | 0 | 0 |
| 5 | tad | tad | 5 | 0 | 0 | 0 | 0 | 0 | 0 | 0 | 0 | 0 |
| 6 | tad | tad | 0 | 0 | 25 | 3 | 0 | 0 | 0 | 0 | 0 | 0 |
| 7 | tad | tad | 2 | 0 | 1 | 22 | 0 | 0 | 0 | 0 | 0 | 0 |
| 8 | tad | tad | 0 | 0 | 0 | 0 | 0 | 0 | 0 | 0 | 0 | 0 |
| 9 | tad | tad | 0 | 0 | 0 | 30 | 0 | 0 | 0 | 0 | 0 | 0 |
| 10 | tad | tad | 17 | 22 | 9 | 0 | 15 | 0 | 0 | 0 | 0 | 0 |
| 11 | tad | tad | 16 | 0 | 7 | 76 | 1 | 0 | 0 | 0 | 0 | 0 |
| 12 | tad | tad | 27 | 0 | 0 | 8 | 0 | 4 | 43 | 0 | 0 | 0 |
| 13 | tad | tad | 3 | 0 | 0 | 96 | 0 | 0 | 16 | 0 | 0 | 0 |
| 14 | tad | tad | 7 | 0 | 0 | 1 | 14 | 4 | 0 | 0 | 0 | 0 |
| 15 | tad | tad | 1 | 0 | 57 | 0 | 0 | 2 | 0 | 0 | 0 | 0 |
| Max | 0 | 0 | 27 | 22 | 57 | 96 | 15 | 4 | 72 | 0 | 0 | 0 |
| Min | 0 | 0 | 0 | 0 | 0 | 0 | 0 | 0 | 0 | 0 | 0 | 0 |
| Rata-rata | #DIV/0! | #DIV/0! | 5 | 1 | 10 | 16 | 2 | 1 | 9 | 0 | 0 | 0 |
| Jumlah Hujan | 0 | 0 | 82 | 22 | 152 | 240 | 30 | 12 | 142 | 0 | 0 | 0 |

GRAFIK : CURAH HUJAN PRIODE (15 HARIAN 1)
STASIUN : UJUNG GADING

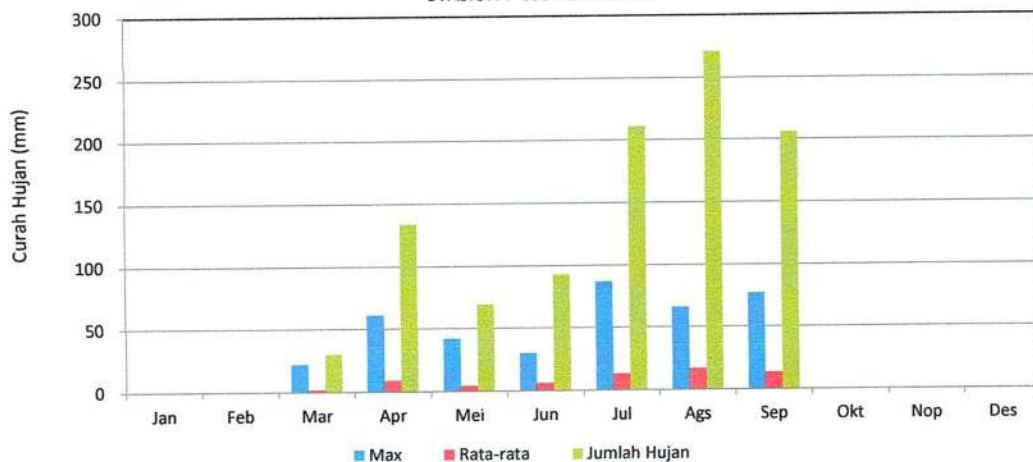


Curah Hujan Priode 15 Harian 2 (mm)

| | | | |
|-----------------|--------------|-------------|--------------------|
| Nama Stasiun | Ujung Gading | River Basin | Batang Sikabau |
| No Stasiun | 0 | Elevasi | 0 |
| No In Database | 0 | Tipe alat | Manual |
| Lintang Selatan | 0,275539° | Pemilik | SDA & BK Wil Utara |
| Bujur Timur | 99,550337° | Operator | RAHMADINI |

| Tanggal | 15 Harian (2) | | | | | | | | | | | |
|--------------|---------------|---------|-----|-----|-----|-----|-----|-----|-----|-----|-----|-----|
| | Jan | Feb | Mar | Apr | Mei | Jun | Jul | Ags | Sep | Okt | Nop | Des |
| 16 | tad | tad | 22 | 0 | 0 | 0 | 0 | 0 | 3 | 0 | 0 | 0 |
| 17 | tad | tad | 0 | 0 | 0 | 30 | 0 | 0 | 77 | 0 | 0 | 0 |
| 18 | tad | tad | 6 | 9 | 0 | 3 | 0 | 0 | 0 | 0 | 0 | 0 |
| 19 | tad | tad | 2 | 37 | 0 | 7 | 0 | 33 | 10 | 0 | 0 | 0 |
| 20 | tad | tad | 0 | 12 | 1 | 0 | 0 | 38 | 0 | 0 | 0 | 0 |
| 21 | tad | tad | 0 | 1 | 1 | 1 | 0 | 12 | 28 | 0 | 0 | 0 |
| 22 | tad | tad | 0 | 0 | 1 | 4 | 45 | 4 | 0 | 0 | 0 | 0 |
| 23 | tad | tad | 0 | 3 | 0 | 14 | 0 | 25 | 14 | 0 | 0 | 0 |
| 24 | tad | tad | 0 | 61 | 42 | 1 | 87 | 55 | 0 | 0 | 0 | 0 |
| 25 | tad | tad | 0 | 0 | 0 | 0 | 15 | 66 | 0 | 0 | 0 | 0 |
| 26 | tad | tad | 0 | 0 | 0 | 0 | 1 | 0 | 16 | 0 | 0 | 0 |
| 27 | tad | tad | 0 | 10 | 7 | 4 | 6 | 6 | 50 | 0 | 0 | 0 |
| 28 | tad | tad | 0 | 0 | 17 | 3 | 51 | 23 | 8 | 0 | 0 | 0 |
| 29 | tad | | 0 | 0 | 0 | 26 | 6 | 9 | 0 | 0 | 0 | 0 |
| 30 | tad | | 0 | 1 | 0 | 0 | 0 | 0 | 0 | 0 | 0 | 0 |
| 31 | tad | | 0 | | | | | | | | | |
| Max | 0 | 0 | 22 | 61 | 42 | 30 | 87 | 66 | 77 | 0 | 0 | 0 |
| Min | 0 | 0 | 0 | 0 | 0 | 0 | 0 | 0 | 0 | 0 | 0 | 0 |
| Rata-rata | #DIV/0! | #DIV/0! | 2 | 9 | 4 | 6 | 13 | 17 | 14 | 0 | 0 | 0 |
| Jumlah Hujan | 0 | 0 | 30 | 134 | 69 | 93 | 211 | 271 | 206 | 0 | 0 | 0 |

GRAFIK : CURAH HUJAN PRIODE (15 HARIAN 2)
STASIUN : UJUNG GADING



Curah Hujan Priode Bulanan (mm)

| | | | |
|-----------------|--------------|-------------|--------------------|
| Nama Stasiun | Ujung Gading | River Basin | Batang Sikabau |
| No Stasiun | 0 | Elevasi | 0 |
| No In Database | 0 | Tipe alat | Manual |
| Lintang Selatan | 0,275539° | Pemilik | SDA & BK Wil Utara |
| Bujur Timur | 99,550337° | Operator | ENNI |

Tahun 2022

| Tanggal | Bulan | | | | | | | | | | | |
|--------------|---------|---------|-----|-----|-----|-----|-----|-----|-----|-----|-----|-----|
| | Jan | Feb | Mar | Apr | Mei | Jun | Jul | Ags | Sep | Okt | Nop | Des |
| 1 | tad | tad | 0 | 0 | 14 | 0 | 0 | 0 | 0 | 10 | 0 | 52 |
| 2 | tad | tad | 0 | 0 | 5 | 4 | 0 | 2 | 72 | 86 | 0 | 48 |
| 3 | tad | tad | 4 | 0 | 0 | 0 | 0 | 0 | 11 | 10 | 5 | 32 |
| 4 | tad | tad | 0 | 0 | 34 | 0 | 0 | 0 | 0 | 42 | 12 | 15 |
| 5 | tad | tad | 5 | 0 | 0 | 0 | 0 | 0 | 0 | 0 | 0 | 29 |
| 6 | tad | tad | 0 | 0 | 25 | 3 | 0 | 0 | 0 | 26 | 0 | 19 |
| 7 | tad | tad | 2 | 0 | 1 | 22 | 0 | 0 | 0 | 0 | 0 | 0 |
| 8 | tad | tad | 0 | 0 | 0 | 0 | 0 | 0 | 0 | 15 | 0 | 2 |
| 9 | tad | tad | 0 | 0 | 0 | 30 | 0 | 0 | 0 | 0 | 70 | 14 |
| 10 | tad | tad | 17 | 22 | 9 | 0 | 15 | 0 | 0 | 7 | 13 | 58 |
| 11 | tad | tad | 16 | 0 | 7 | 76 | 1 | 0 | 0 | 10 | 10 | 9 |
| 12 | tad | tad | 27 | 0 | 0 | 8 | 0 | 4 | 43 | 0 | 0 | 14 |
| 13 | tad | tad | 3 | 0 | 0 | 96 | 0 | 0 | 16 | 8 | 1 | 100 |
| 14 | tad | tad | 7 | 0 | 0 | 1 | 14 | 4 | 0 | 28 | 33 | 17 |
| 15 | tad | tad | 1 | 0 | 57 | 0 | 0 | 2 | 0 | 54 | 31 | 0 |
| 16 | tad | tad | 22 | 0 | 0 | 0 | 0 | 0 | 3 | 3 | 62 | 0 |
| 17 | tad | tad | 0 | 0 | 0 | 30 | 0 | 0 | 77 | 0 | 39 | 0 |
| 18 | tad | tad | 6 | 9 | 0 | 3 | 0 | 0 | 0 | 0 | 18 | 0 |
| 19 | tad | tad | 2 | 37 | 0 | 7 | 0 | 33 | 10 | 3 | 0 | 0 |
| 20 | tad | tad | 0 | 12 | 1 | 0 | 0 | 38 | 0 | 6 | 0 | 0 |
| 21 | tad | tad | 0 | 1 | 1 | 1 | 0 | 12 | 28 | 0 | 20 | 22 |
| 22 | tad | tad | 0 | 0 | 1 | 4 | 45 | 4 | 0 | 1 | 62 | 0 |
| 23 | tad | tad | 0 | 3 | 0 | 14 | 0 | 25 | 14 | 21 | 6 | 0 |
| 24 | tad | tad | 0 | 61 | 42 | 1 | 87 | 55 | 0 | 0 | 49 | 0 |
| 25 | tad | tad | 0 | 0 | 0 | 0 | 15 | 66 | 0 | 4 | 0 | 0 |
| 26 | tad | tad | 0 | 0 | 0 | 0 | 1 | 0 | 16 | 16 | 0 | 0 |
| 27 | tad | tad | 0 | 10 | 7 | 4 | 6 | 6 | 50 | 20 | 0 | 0 |
| 28 | tad | tad | 0 | 0 | 17 | 3 | 51 | 23 | 8 | 17 | 0 | 22 |
| 29 | tad | tad | 0 | 0 | 0 | 26 | 6 | 9 | 0 | 12 | 17 | 56 |
| 30 | tad | tad | 0 | 1 | 0 | 0 | 0 | 0 | 0 | 9 | 15 | 9 |
| 31 | tad | tad | 0 | tad | 0 | tad | 0 | 0 | tad | 2 | tad | 0 |
| Max | 0 | 0 | 27 | 61 | 57 | 96 | 87 | 66 | 77 | 86 | 70 | 100 |
| Min | 0 | 0 | 0 | 0 | 0 | 0 | 0 | 0 | 0 | 0 | 0 | 0 |
| Rata-rata | #DIV/0! | #DIV/0! | 4 | 5 | 7 | 11 | 8 | 9 | 12 | 13 | 15 | 17 |
| Jumlah Hujan | 0 | 0 | 112 | 156 | 221 | 333 | 241 | 283 | 348 | 410 | 463 | 518 |

GRAFIK : CURAH HUJAN PRIODE BULANAN (MM)
STASIUN : UJUNG GADING

